

# The 1809 EXL Reflow System

- Compatible with both eutectic and lead-free alloys
- Lowest cost of ownership
- High reliability
- Best overall value



The 1809EXL supports high mix / high volume throughput... at speeds up to 32 inches (80 centimeters) per minute, while conserving valuable factory floor space. Rapid response times and precise temperature controls assure process uniformity, regardless of component density or board loading, with identical profile performance in either *air or nitrogen*.

The Model 1809 EXL combines sophisticated design elements with the engineering expertise and reflow technology leadership you've come to expect from Heller Industries:

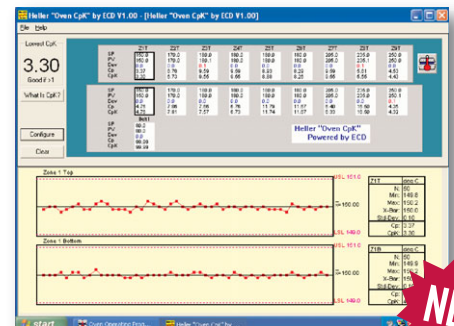
## Highest Yields and Tight Process Control

- **The most efficient heat transfer** from extra high volume, high-velocity, heating modules, producing heater module response of less than one second to temperature changes of less than **0.1°C**, thereby maintaining profile integrity for heavy board loads.
- **Wide process window** for "universal profiling" — allows many different boards to be run on a single temperature profile
- Included with every system:
  - **Advanced 5 thermocouple PCB profiling** and process parameter logging capability with the capacity to store up to 500 temperature recipes and 500 profile graphs
  - **Cpk software** — "real-time" Cpk calculation shows oven performance and repeatability and gives Cpk data for each zone and the entire oven — a Heller exclusive!

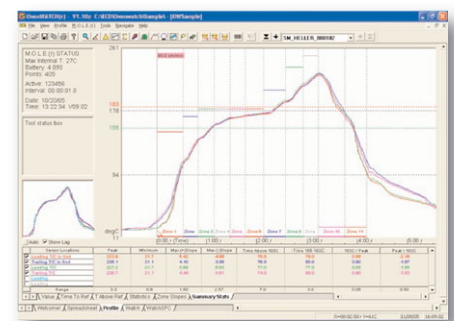
## Lowest Cost of Ownership

- **Computer-controlled automatic lubrication system** for "hands-off" maintenance
- **Optional flux separation system** removes up to 95% of flux from the oven tunnel — virtually eliminating maintenance and protecting the environment
- **Pure forced convection design** saves nitrogen — with consumption levels as low as 700 SCFH at 500 PPM\*
- **Low KW design** saves electricity and reduces warm up and profile changeover time

\* Depends on board width and vertical clearance



Integrated "real-time" Cpk software provides instant process data — at no additional charge!

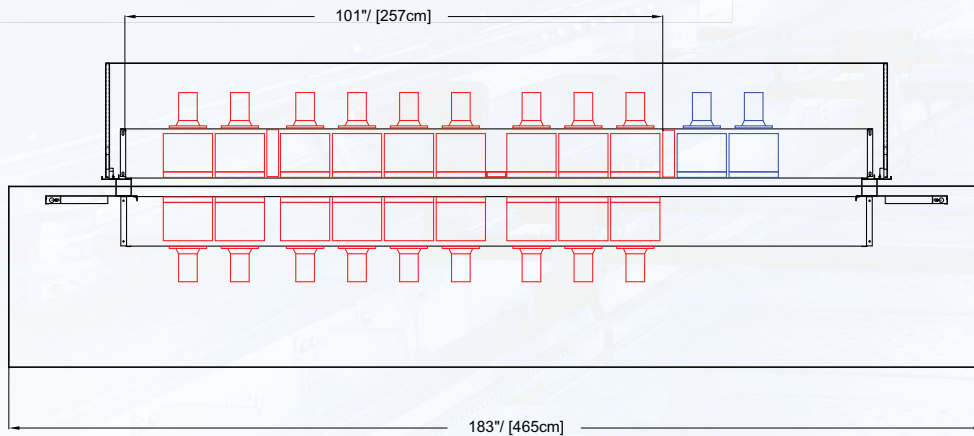


Pure convection technology provides flexibility to produce any solder paste manufacturer's recommended profile.

# HELLER INDUSTRIES

## The Technology Leader in Reflow Soldering

# The 1809 EXL Reflow System



With a high-capacity, 26-inch wide heater module, the 1809 EXL offers unmatched flexibility in board handling. The oven may be fitted with an adjustable single-rail edge hold conveyor/mesh belt combo, to carry even the largest boards or multi-board panels (up to 20 inches wide) through the oven.

Model	1809 EXL (Air)	1809 EXL (Nitrogen)
Power Input (3 Phase) Standard	480 volts	480 volts
Breaker Size	100 amps @ 208/240 v	100 amps @ 208/240 v
Optional Power Inputs Available	240/280/380/400/415 VAC	240/280/380/400/415 VAC
Overall Length	183" (465 cm)	183" (465 cm)
Overall Width	54" (137 cm)	54" (137 cm)
Overall Height	63" (160 cm)	63" (160 cm)
Typical Net Weight	4000 lbs. (1800 kg)	4000 lbs. (1800 kg)
Windows Operating System	Windows XP®	Windows XP®
Waterless Cooling w/ Flux Separation System	-	0
Typical Nitrogen Consumption	-	700 - 900 SCFH*
KIC Profiling Software	S	S
Signal Light Tower	S	S
Powered Hood Lift	S	S
Five (5) Thermocouple Profiling	S	S
Center Board Support	0	0
Height from Floor – Standard	35.5" ± 2.0" (90 cm ± 5 cm)	35.5" ± 2.0" (90 cm ± 5 cm)
Clearance Above Conveyor Pins	1.15" (2.9 cm)	1.15" (2.9 cm)
Clearance Below Conveyor Pins	1.15" (2.9 cm)	1.15" (2.9 cm)
Length of PCB Support Pins	.187" (4.75 mm)	.187" (4.75 mm)
Minimum/Maximum Board Width	2" - 20" (5 - 50.8 cm)	2" - 20" (5 - 50.8 cm)
** Requires 30" Heater Modules	24" (61 cm)**	24" (61 cm)**
Power Width Adjustment	S	S
Computer Controlled Width Adjust	0	0
Auto Lubrication System	S	S
Top Heating Zones	9	8 + 1 IR in zone one
Bottom Heating Zones	9	8 + 1 IR in zone one
Number of Cooling Zones Standard	2	2
Heater Type	Instant response open coil	Instant response open coil
Heater Material	Nichrome	Nichrome
Temperature Range Standard	25-350° C	25-350° C
High Temperature Up to 450° C	0	0

\* Depends on PPM, board width and vertical clearance

## HELLER INDUSTRIES

4 Vreeland Road  
 Florham Park, New Jersey 07932 USA  
 Tel: 973.377.6800 | Fax: 973.377.3862  
[www.hellerindustries.com](http://www.hellerindustries.com)